

Xpert Retest Procedure

- Xpert C. difficile BT
- Xpert MRSA/SA SSTI
- Xpert vanA/vanB

Refer to the package insert for detailed instructions, precautions, and warnings.

For a copy of the SDS, visit www.cepheid.com or www.cepheidinternational.com

Cepheid Technical Support
US office
(888) 838-3222, Option 2
techsupport@cepheid.com

European office
+33 563 82 53 19
support@cepheideurope.com

Follow this retest procedure within 3 hours of an **ERROR**, **INVALID**, or **NO RESULT**.

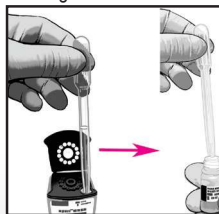
Otherwise:
Retest with the remaining sample if the volume is sufficient
or
Collect a new sample and process the sample per the package insert.



- 1 Retain the used cartridge. Obtain a new Xpert cartridge and a new Sample Reagent vial.



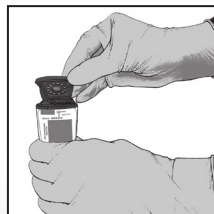
- 2 Transfer all the remaining contents from the Sample chamber of the used cartridge to a new Sample Reagent vial.



- 3 Recap the Sample Reagent vial and vortex for 10 seconds.



- 4 Open the new Xpert cartridge lid.



- 5 Aspirate all of the Sample Reagent vial contents with a disposable transfer pipette.



- 6 Empty the pipette into the sample chamber.



- 7 Close the Xpert cartridge lid and start the test within the timeframe specified in the package insert.

