



Upgrade today.

More Answers,
More Targets,
More Insights,

Get **more** than results.

**GeneXpert® System
with 10-color Technology :**

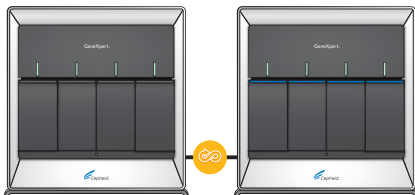
Hybrid Module Configuration

Allows upgrading a 6-color module system with 10-color modules to run the Xpert® MTB/XDR test, future multiplexed tests, and future syndromic panels.*

GeneXpert II, IV, XVI Systems with both 6-color and 10-color modules[^]



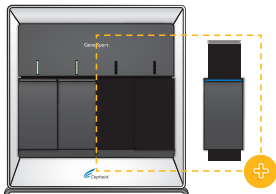
It has never been easier to get more answers...



1 Daisy Chain

For a 6-color system at full capacity, add a 10-color instrument

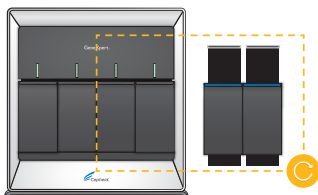
Accelerate the adoption of the Xpert[®] MTB/XDR test and ensure readiness for future Xpert tests while keeping a small footprint and saving on extra computer, LIS connection, or validation.



2 Expand Capacity

For a 6-color system below capacity, add new 10-color modules[#]

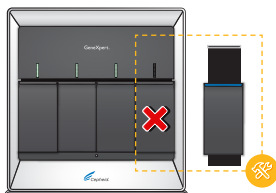
Increase system capacity to adopt the Xpert MTB/XDR Xpert test or to ensure the readiness of your system for future Xpert tests.



3 Convert Modules

For a 6-color system at or below capacity, swap 6-color modules for 2 or 4 Refurbished 10-color at a preferential price[#]

Keep the same system capacity to adopt the Xpert MTB/XDR Xpert test or to ensure the readiness of your system for future Xpert tests.



4 Upgrade on Failure

For a failed 6-color module, replace the 6-color module for a refurbished 10-color at no additional charge[†]

Accelerate the adoption of the Xpert MTB/XDR test.

* Product in development. Not for use in diagnostic procedures. Not reviewed by any regulatory body.

[^] 10-color hybrids are not available for GeneXpert systems R1 generation, GeneXpert Infinity systems, GeneXpert Xpress systems, or GeneXpert systems running Microsoft Windows 7 operating system.

[#] Not available in all countries.

[†] Not available in all countries; conditions may apply.

CE-IVD. In Vitro Diagnostic Medical Device. May not be available in all countries.

CORPORATE HEADQUARTERS

904 Caribbean Drive
Sunnyvale, CA 94089 USA

TOLL FREE +1.888.336.2743
PHONE +1.408.541.4191
FAX +1.408.541.4192

EUROPEAN HEADQUARTERS

Vira Solelh
81470 Maurens-Scopont France

PHONE +33.563.82.53.00
FAX +33.563.82.53.01
EMAIL cepheid@cepheideurope.fr

www.Cepheidinternational.com

© 2024 Cepheid. 3367-02

