

# Xpert GBS Cartridge Preparation

Refer to the package insert for detailed instructions, precautions, and warnings.

For a copy of the SDS, visit [www.cepheid.com](http://www.cepheid.com) or [www.cepheidinternational.com](http://www.cepheidinternational.com)

Cepheid Technical Support  
US office  
(888) 838-3222  
[techsupport@cepheid.com](mailto:techsupport@cepheid.com)

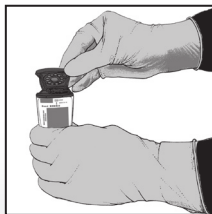
European office  
+33 563 82 53 19  
[support@cepheideurope.com](mailto:support@cepheideurope.com)



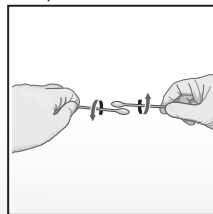
1 Obtain one cartridge.



2 Open the cartridge lid.

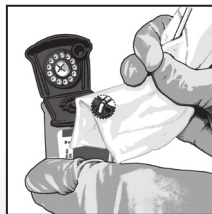


3 Remove the swabs from the container. Gently brush swabs together to distribute sample on each swab. Return one swab to transport tube.



**Note:** Do not hold the swab below the score mark.

4 Insert the other swab into the cartridge sample chamber. Break the swab at the score mark.



**Note:** Use gauze or its equivalent to minimize the risk

5 Make sure the swab can float freely in the chamber.



Incorrect swab placement. Swab end is caught in the notch of the sample chamber opening.



6 Close the cartridge lid. Start the test within the timeframe specified in the package insert.



# Xpert Retest Procedure

- Xpert GBS

**Refer to the package insert for detailed instructions, precautions, and warnings.**

For a copy of the SDS, visit [www.cepheid.com](http://www.cepheid.com) or [www.cepheidinternational.com](http://www.cepheidinternational.com)

Cepheid Technical Support  
US office  
(888) 838-3222, Option 2  
[techsupport@cepheid.com](mailto:techsupport@cepheid.com)

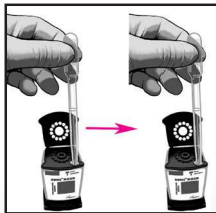
European office  
+33 563 82 53 19  
[support@cepheideurope.com](mailto:support@cepheideurope.com)



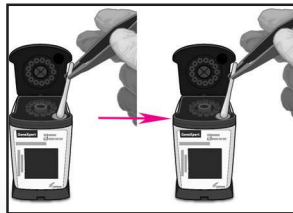
- 1 Retain the used cartridge.  
Obtain a new Xpert cartridge.



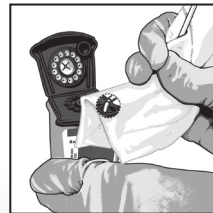
- 2a If there is fluid in the cartridge sample chamber, use a sterile transfer pipette to transfer all the fluid to the sample chamber of a new cartridge.



- 2b If there is no fluid, use sterile tweezers to transfer the swab to a new cartridge.



- 2c Or prepare a new cartridge using the second swab as shown on the reverse side.



- 3 Close the cartridge lid. Start the test within the specified timeframe.

