



About Respiratory Illnesses

The co-circulation of COVID-19, Flu, and respiratory syncytial virus (RSV) has led to an increased burden on healthcare settings and increased risk of severe illness for high-risk populations.^{1,2}

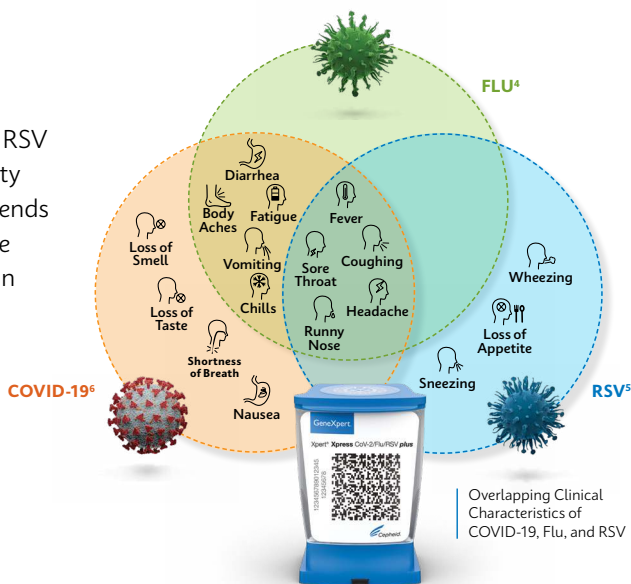
Why are respiratory illnesses a problem?

Seasonal outbreaks of the viruses causing COVID-19, Flu, and RSV pose compounding issues to healthcare systems and a particular threat to children, the elderly, immunocompromised individuals, and those with underlying conditions. This can lead to service disruption, pressure on A&E departments, and missed targets for elective surgeries.³

These three contagious respiratory illnesses often have **overlapping symptoms**, which can make correct virus detection a challenge.

How to test?

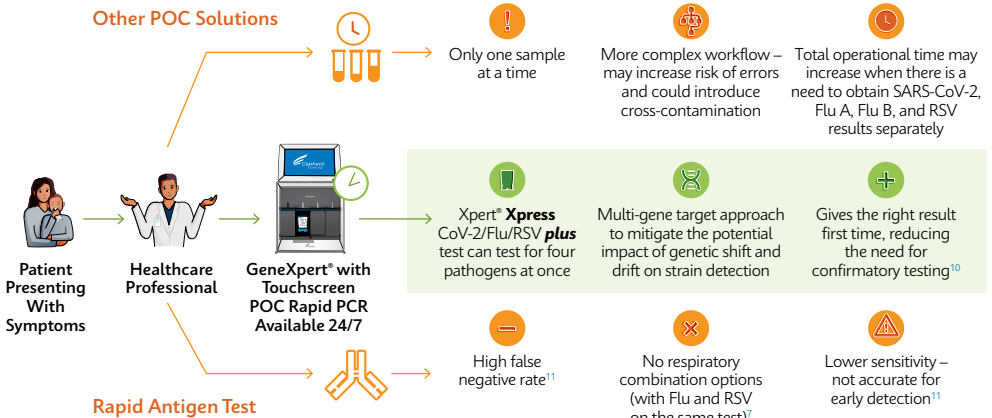
PCR testing remains the gold standard for COVID-19, Flu, and RSV diagnosis due to its high sensitivity and specificity.⁷ UKHSA recommends a PCR test to determine the cause of an acute respiratory infection in higher risk settings.^{8,9}



Overlapping Clinical Characteristics of COVID-19, Flu, and RSV

Why test with fast PCR?

The superior turnaround time and performance of multiplex respiratory testing at point-of-care delivers rapid, accurate results that can inform effective clinical decision making and appropriate treatment plans.



Xpert **Xpress** CoV-2/Flu/RSV **plus** allows for accurate and rapid results, optimising diagnostic efficiency and improving the provision of appropriate treatment. It may result in significant cost savings compared to antigen and send-away PCR testing strategies and may result in fewer hospitalisations, ICU admissions, and deaths.¹²



Scan or click to learn more

CE-IVD. *In Vitro* Diagnostic Medical Device. Not available in all countries.

- Tam JS, Shu Y. China CDC Wkly. 2022 Jan 14;4(2):22-26.
- ECDC Intensified circulation of respiratory syncytial virus (RSV) and associated hospital burden in the EU/EEA. December 2022 <https://www.ecdc.europa.eu/en/publications-data/intensified-circulation-respiratory-syncytial-virus-rsv-and-associated-hospital>
- NHS Confederation. Analysis: System under pressure <https://www.nhsconfed.org/topic/capacity-performance/system-under-pressure> Accessed July 2024
- Flu – Centers for Disease Control and Prevention (January 4, 2022). Flu Symptoms & Complications, “Flu Symptoms.” Retrieved from: <https://www.cdc.gov/flu/symptoms/symptoms.html>
- RSV – Centers for Disease Control and Prevention (January 4, 2022). Symptoms and Care, “Symptoms.” Retrieved from: <https://www.cdc.gov/rsv/about/symptoms.html>
- COVID-19 – Centers for Disease Control and Prevention (January 4, 2022). Symptoms of COVID-19, “Watch for Symptoms.” Retrieved from: <https://www.cdc.gov/coronavirus/2019-ncov/symptoms-testing/symptoms.html>
- Zhen et al. 2020 Jan. J Clin Microbiol. 2020;58(8):e00783-00720.
- UKHSA, Covid-19: testing from 1 April 2024 <https://www.gov.uk/guidance/covid-19-testing-from-1-april-2024> Accessed July 2024
- UKHSA, Guidance: Sources of surveillance data for influenza, COVID-19 and other respiratory viruses [https://www.gov.uk/government/publications/sources-of-surveillance-data-for-influenza-covid-19-and-other-respiratory-viruses](https://www.gov.uk/government/publications/sources-of-surveillance-data-for-influenza-covid-19-and-other-respiratory-viruses/sources-of-surveillance-data-for-influenza-covid-19-and-other-respiratory-viruses). Accessed July 2024
- K. Stockl, et al (2023). J Mol Diagn, 25(11) (S1-S186): S53.
- Wölfel R, et al. Nature. 2020 May; 581(7809):465-469.
- Davies, et al. (2023). J Mol Diagn, 25(11) (S1-S186): S64.

CORPORATE HEADQUARTERS

904 Caribbean Drive
Sunnyvale, CA 94089 USA

TOLL FREE +1.888.336.2743
PHONE +1.408.541.4191
FAX +1.408.541.4192

EUROPEAN HEADQUARTERS

Vira Solelh
81470 Maurens-Scopont France

PHONE +33.563.82.53.00
FAX +33.563.82.53.01
EMAIL cepheid@cepheideurope.fr

www.Cepheidinternational.com

© 2024 Cepheid. 3389-01



danaher.