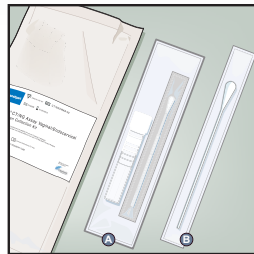
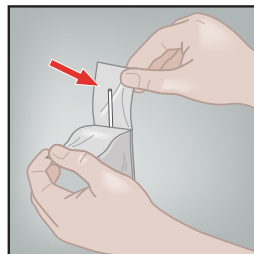


Xpert® CT/NG Patient-Collected Vaginal Swab Specimen Collection

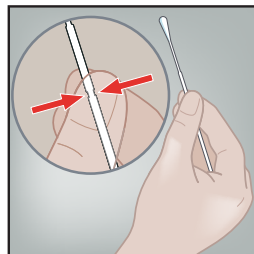
1
.....
Open the individual collection package (A) that contains the pink-capped Xpert® Swab Transport Reagent tube and individually wrapped collection swab. Set the tube aside before beginning to collect sample. Discard the larger swab (B).



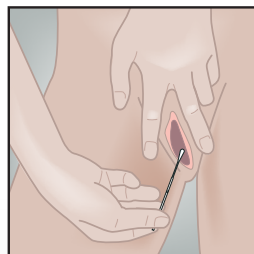
2
.....
Open the collection swab wrapper by peeling open the top of the wrapper. Remove the swab, taking care not to touch the tip or lay it down.



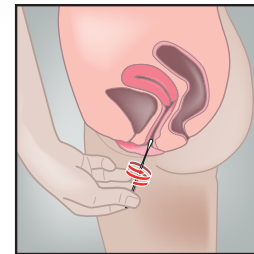
3
.....
Hold the swab in your hand, placing your thumb and forefinger in the middle of the swab shaft across the scoreline.



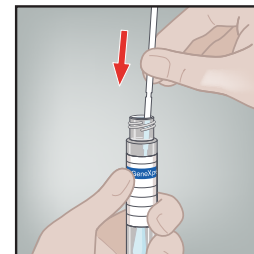
4
.....
Carefully insert the swab into your vagina about two inches inside the opening of the vagina.



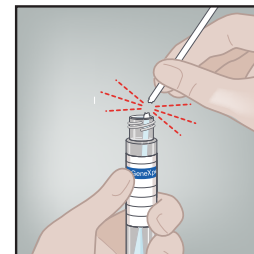
5
.....
Gently rotate the swab for 10 – 30 seconds. Ensure the swab touches the walls of the vagina so that moisture is absorbed by the swab. Withdraw the swab and continue to hold it in your hand.



6
.....
Unscrew the cap from the transport tube. Immediately place the collection swab into the transport tube.



7
.....
Identifying the scoreline, break the swab shaft against the side of the tube. Discard the top portion of the swab shaft. Avoid splashing contents on the skin. Wash with soap and water if exposed.



8
.....
Re-cap the transport tube and tighten the cap securely. Return the tube as instructed by your doctor, nurse or care-provider. Note: Health care provider should label the transport tube with the sample identification information, including date of the collection, as required.

