

Xpert® Carba-R Cartridge Preparation

preparing 0.5 McFarland suspension of a carbapenem-non-susceptible bacterial isolate

Refer to the package insert for detailed instructions, precautions, and warnings.

For a copy of the SDS, visit www.cepheid.com or www.cepheidinternational.com

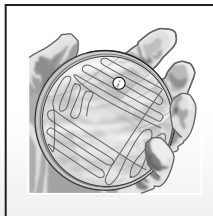
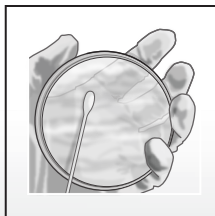
Cepheid Technical Support

US office
(888) 838-3222
techsupport@cepheid.com

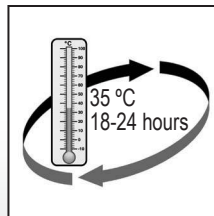
European office
+33 563 82 53 19
support@cepheideurope.com



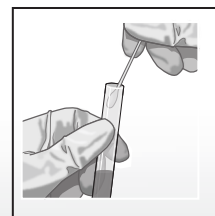
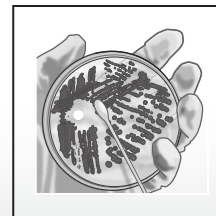
- 1 Inoculate the organism onto either a blood or MacConkey agar plate, streak for isolation and place a 10 µg meropenem disk in the first streak quadrant to ensure that the isolate is still carbapenem-non-susceptible.



- 2 Incubate the plate at 35 °C for 18-24 hours in ambient air.



- 3 Use the direct colony suspension method by touching isolated colonies with a swab or loop to prepare a 0.5 McFarland suspension of the bacterial isolate. Refer to the package insert for further details.



Xpert® Carba-R Cartridge Preparation

using a prepared 0.5 McFarland suspension of a carbapenem-non-susceptible bacterial isolate



Refer to the package insert for detailed instructions, precautions, and warnings.

For a copy of the SDS, visit www.cepheid.com or www.cepheidinternational.com

Cepheid Technical Support

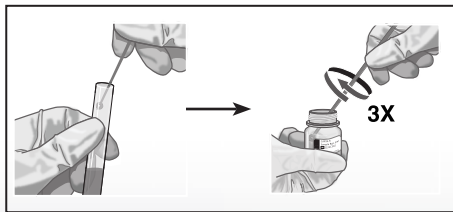
US office
(888) 838-3222
techsupport@cepheid.com

European office
+33 563 82 53 19
support@cepheideurope.com

1 Remove a Xpert Carba-R Assay cartridge, a Sample Reagent vial and a transfer pipette from the kit. Open the vial of Sample Reagent.



2 Vortex the 0.5 McFarland suspension. Using a 10 μ L loop, transfer 10 μ L of the 0.5 McFarland suspension to the Sample Reagent vial.

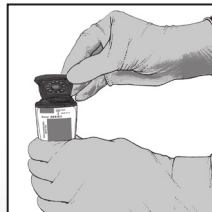


Swirl the loop a minimum of 3 times in the Sample Reagent.

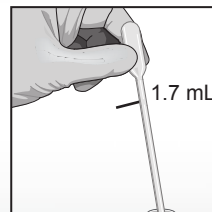
3 Close the Sample Reagent cap tightly and vortex at high speed for 10 seconds.



4 Open the Xpert cartridge lid.



5 Using the transfer pipette provided, aspirate prepared sample up to the mark on the pipette (approximately 1.7 mL).



6 Empty the pipette into the sample chamber.



7 Close the Xpert cartridge lid. Start the test within the timeframe specified in the package insert.

